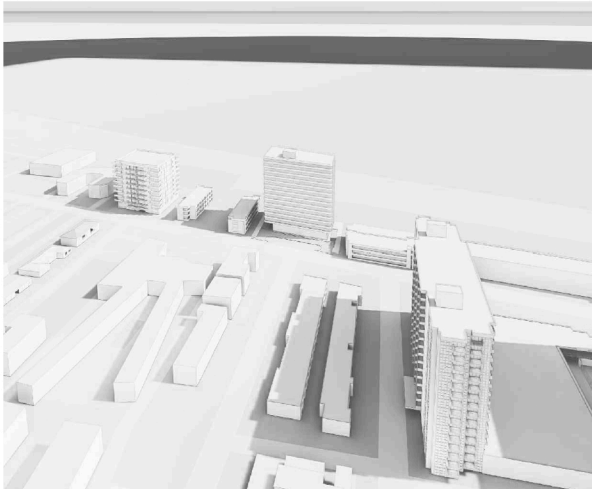




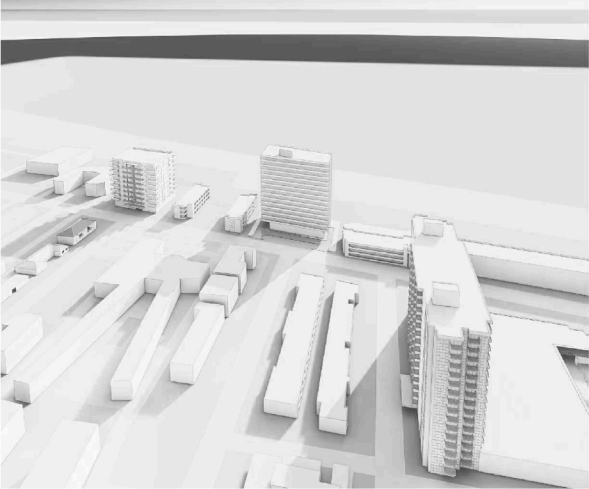
12 PM
NOON



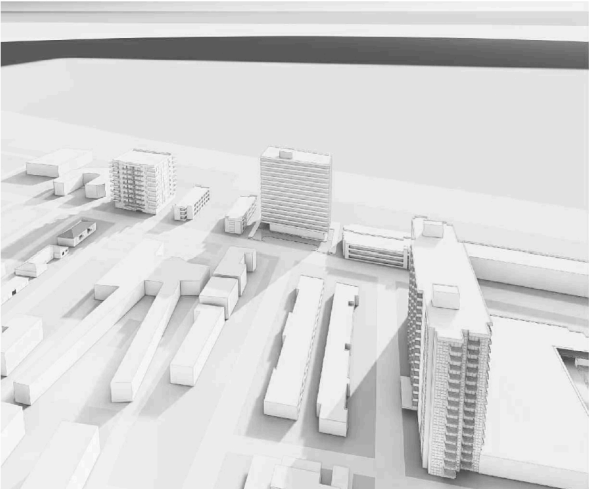
4 PM
2 HOURS BEFORE SUNSET



SPRING
9 AM
2 HOURS AFTER SUNRISE



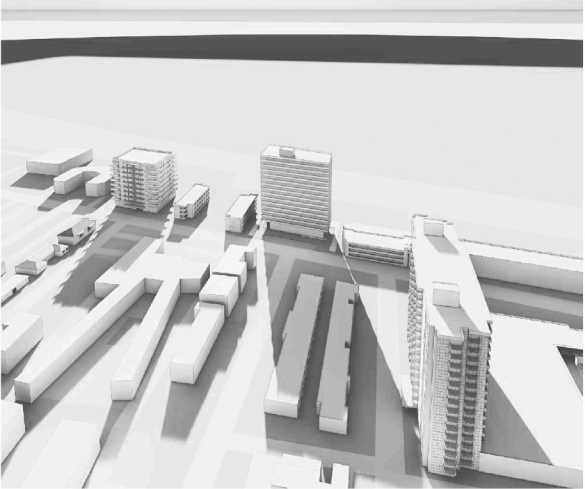
12 PM
NOON



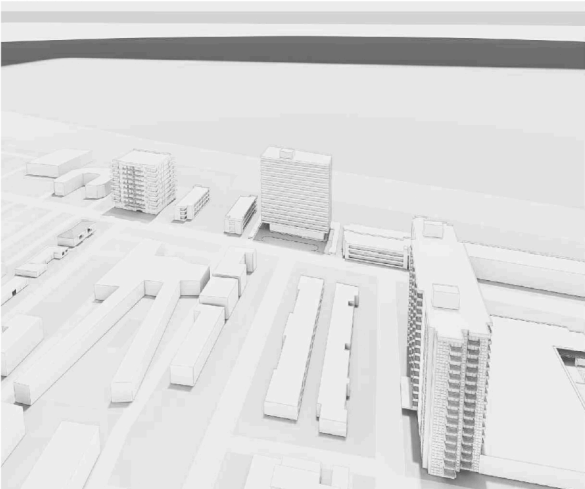
5 PM
2 HOURS BEFORE SUNSET



SUMMER
8 AM
2 HOURS AFTER SUNRISE



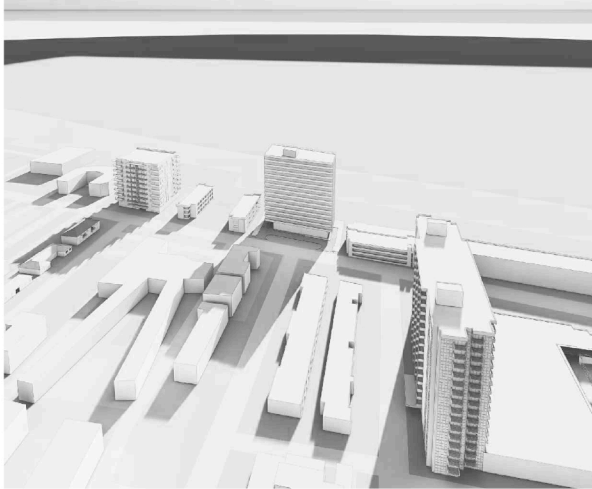
12 PM
NOON



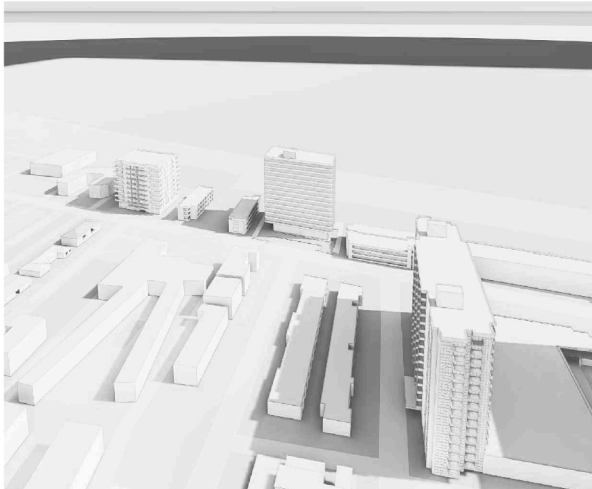
6 PM
2 HOURS BEFORE SUNSET



FALL
9 AM
2 HOURS AFTER SUNRISE



12 PM
NOON



5 PM
2 HOURS BEFORE SUNSET

